

CERTIFIED LAND CORNER RECORDATION

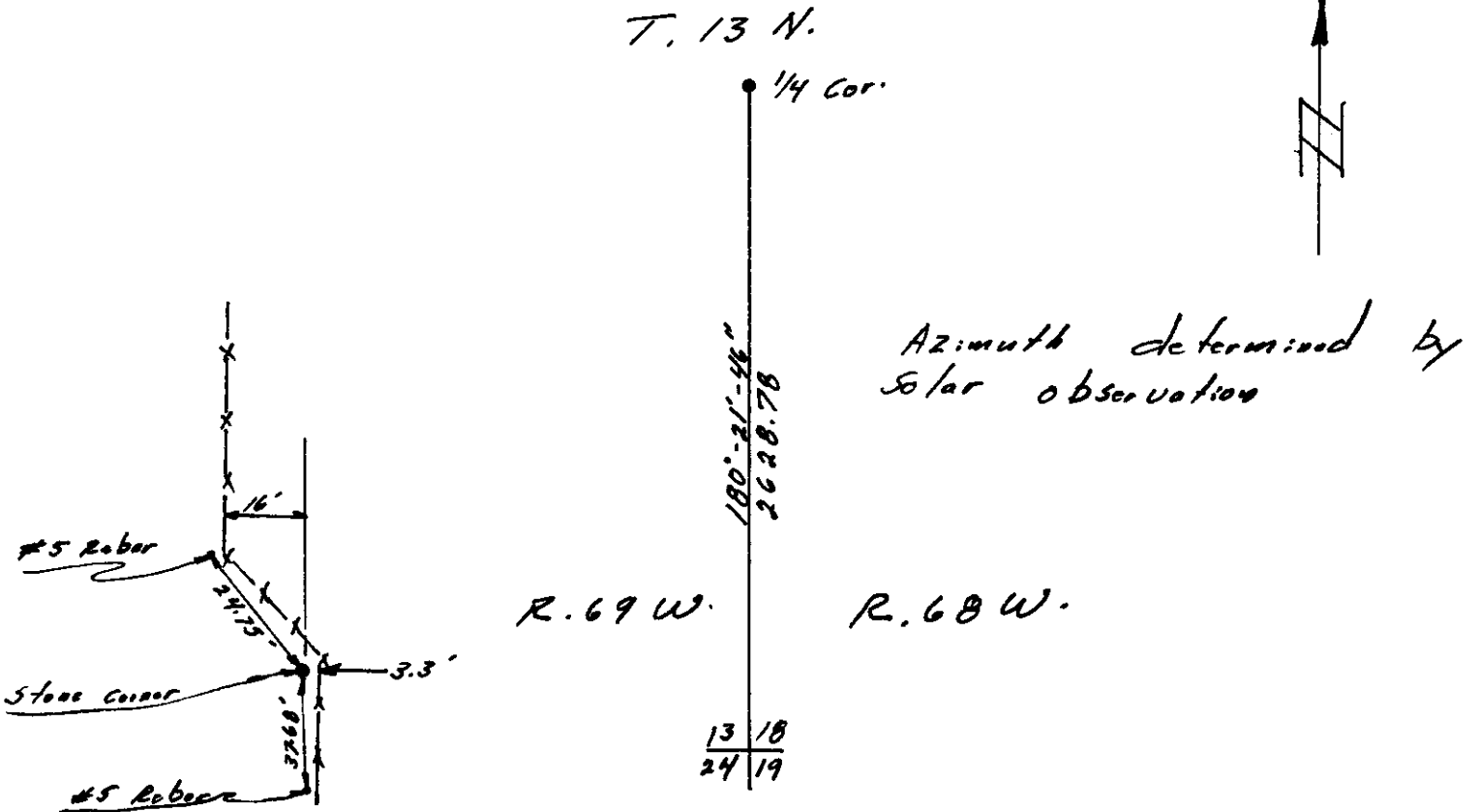
DESCRIPTION OF CORNER EVIDENCE FOUND, AND ORIGINAL RECORD (If known)

Section Cor. $\frac{13}{24} | \frac{18}{19}$ T. 13 N. , R. 68-69 W
 Found granite stone 10" x 12" x 20" - Notched - 3 in North & South - Fallen over - Re-set & punched dot on TOP

DESCRIPTION OF MONUMENT AND ACCESSORIES ESTABLISHED TO PERPETUATE THE ORIGINAL LOCATION OF THIS CORNER:

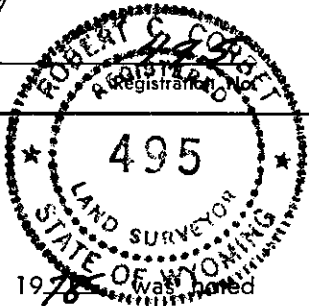
set No. 5 Rebar in fence line 24.75' Northwest
 set No. 5 Rebar in fence line 37.68' South

SKETCH, WITH COURSE AND DISTANCE TO ADJACENT CORNER IF DETERMINED IN THIS SURVEY.
 (May Sketch or Paste Reproduction on Reverse Side.)



I, Robert C. Corbet certify that I have carefully performed or reviewed the work done on the diagrammed corner as reported on this recordation form and approve the same

Robert C. Corbet
 Signature of Surveyor



STATE OF WYOMING,
 Office of Clerk and Recorder,
 County of Terrace

496610

This "corner record" was filed for record on the 22 day of August, 1978, on the cross-index plat and is assigned page No. _____, in book No. _____.

Janet C. Whitehead
 County Official

Cross Index No. _____	T. _____	R. _____	Mer. _____
_____	T. _____	R. _____	Mer. _____
_____	T. _____	R. _____	Mer. _____
_____	T. _____	R. _____	Mer. _____
_____	T. _____	R. _____	Mer. _____
_____	T. _____	R. _____	Mer. _____
_____	T. _____	R. _____	Mer. _____